



RIVERTON
EDUCATION
SUPPORT CENTRE

INDEPENDENT PUBLIC SCHOOL

2025

Annual Report



CONTENTS

School Overview page 3

Yearbook snapshot page 4, 5

Student Numbers and Characteristics page 6

Workforce Composition page 7

Student Attendance Data page 8

Destination Data page 8

Assessment data page 9,10

Student SEN Analysis page 11,12

Financial Summary page 13,14

SCHOOL OVERVIEW



Vision & Values
RIVERTON PRIMARY CAMPUS

Riverton Primary Campus is an inclusive community where everyone works collaboratively in a rich learning environment to achieve their academic, social and emotional potential.

Excellence **Inclusion**

Collaboration **Respect**

The graphic features four icons in a circular arrangement: a bar chart with an upward arrow (Excellence), a hand holding a heart (Inclusion), a group of people (Collaboration), and a shield with a checkmark (Respect).

Riverton is a residential suburb 21 kms from Perth City and 15 kms from Fremantle. It is on the eastern boundary of Fremantle / Peel Education District.

Riverton Education Support Centre (ESC) is an Independent Public School established on the Riverton Primary School site in 2003. The Centre has a Principal, Deputy Principal, Teachers, Education Assistants, Managers' Corporate Services, Student Support Officer and School Officer. The Centre shares the facilities with Riverton Primary School. The Centre currently has 44 students enrolled. Riverton ESC caters for students ranging from Kindergarten to Year 6 who have a diagnosed disability meeting eligibility in accordance with Department of Education processes and criteria.

The Primary School and the Education Support Centre both fall under Riverton Primary Campus. Riverton Campus is an inclusive environment where all staff members work together to provide an inclusive environment for all students.

We currently cater for students in five classes with specialist staff delivering quality programs across the learning areas. Each student has an Individual Education Plan developed in collaboration with the students' parents and key stakeholders. The level of staffing in the classrooms is dependent upon students' individual needs.

Our School Values provide a strong foundation for building social responsibility and a sense of belonging through collaboration between student, family, school, and the wider community. The ethos of our school is embedded in our values of Excellence, Inclusion, Collaboration and Respect.

YEARBOOK SNAPSHOT

Some of our best work

BEST WORK

OFFICIAL

Our school Totem poles

This year, we have had the wonderful opportunity to collaborate with WA Yarning Circles to create the beautiful totems displayed outside our office. Our school's connection to the land we live and learn on is deeply important, and we were privileged to have Whadjuk Noongar Elders, Nigel and Alice, share their knowledge of the Country on which we are placed.

Kenneth then brought this story to life through the design of the totems. They represent the Djarlgarro Beelier (Canning River) and the way the river transforms from fresh water to salt water as it flows toward the ocean. The darker totem symbolises the fresh water, while the lighter totem represents the salt water. Together, they depict the animals and the natural transition between these two environments.

Students can feel each animal emerging from the totem or sit by the swamp tortoise and her eggs. It has become a beautiful place to sit and read a story, chat with friends, or simply enjoy a quiet moment of reflection.

SCIENCE TECHNOLOGY ENGINEERING MATHEMATICS

S T E M

Term 3

I learned about doctors in the community.

I did an experiment.

We learnt about doctors in the community.

We did an experiment with fatty milk, dishwashing liquid and food colouring. The fat and protein molecules in the milk are altered by the dishwashing liquid. This causes them to roll around. Once the soap molecules have mixed evenly with the fat and protein molecules in the milk, the reaction will stop.

Sports Extravaganza!

4 April

On Thursday, April 4, Riverton Primary's school oval buzzed with excitement as students from our five Education Support classes rotated through a series of inclusive-sport stations, supported by enthusiastic Peer Leaders from mainstream.

Student explored a different sport, hosted by respected community organisations:

- Junior Goals (soccer) – quick skills, teamwork, lots of high fives
- Rebound WA (wheelchair basketball) – inclusive, fast-paced, adaptive for all abilities
- Cockburn Cougars basketball – fun drills and modified games with local club coaches
- Autism in Cricket – sensory-aware cricket activities for students on the autism spectrum
- Lobo Tennis – accessible tennis with a strong emphasis on personalised encouragement

The day that truly embodied the values of inclusive sport: participation, belonging, fun, and respect for all abilities.



OFFICIAL

INTEGRATION

Getting some hints in Minecraft Ed. from Room 22

Love playing with friends in PPS!

Getting some hints in Minecraft Ed. with Room 22

Edmund playing roughs and cross in the...

Integrating ESC into mainstream classrooms fosters a more inclusive and empathetic learning environment. It encourages academic growth through peer interaction, promotes social development, and helps all students build understanding and respect for differences. Teachers become more innovative, and the entire school community benefits from a culture of acceptance and collaboration. Inclusion isn't just about placement—it's about creating opportunities for every student to thrive together.

LITTLE CHEFS, BIG MESS
Cooking

Rivo Chile

A sensory room is a vital space for children, offering a safe and calming environment where they can regulate their emotions, reduce anxiety, and engage their senses in a controlled way. These rooms support sensory development, improve focus, and help children build coping strategies that enhance their ability to participate in everyday classroom activities. By providing tailored sensory experiences, schools foster inclusion and empower every child to thrive.

Student Numbers (as at 2025 Semester 2)

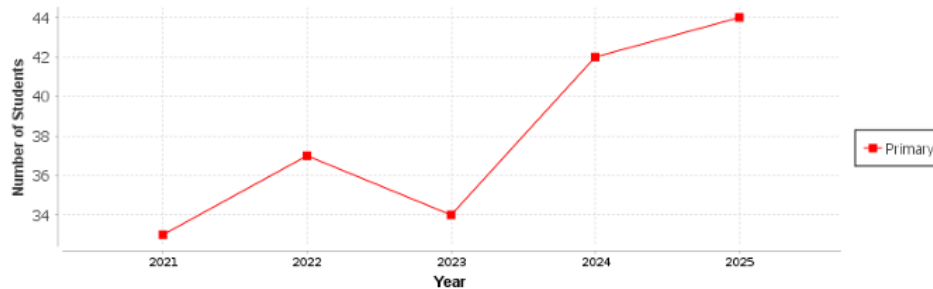
Primary

	Kin	PPR	Y01	Y02	Y03	Y04	Y05	Y06	Total
Full Time		4	9	4	8	9	3	7	44

Gender

	Kin	PPR	Pri	Sec	Total
Male		2	32		34
Female		2	8		10
Total		4	40		44

Student Number Trends (based on 2025 Semester 2 Census Data)



The Centre continues to reflect a significant predominance of male enrolments. Students in the Centre have a range of diagnosis including Intellectual Disability, Physical Disability and Autism Spectrum Disorder.

2026 Considerations

- Maintain enrolment records of students who were declined due to capacity limitations, in the event a placement becomes available.

WORKFORCE COMPOSITION

Staff Numbers

	No	FTE	AB'L
Principals	1	1.0	0
Associate / Deputy / Vice Principals	1	0.6	0
Total Administration Staff	2	1.6	0
Other Teaching Staff	8	6.2	0
Total Teaching Staff	8	6.2	0
Clerical / Administrative	4	1.8	0
Other Allied Professionals	30	21.7	0
Total Allied Professionals	34	23.5	0
Total	44	31.3	0

Note:

All teaching staff meet the professional requirements to teach in Western Australian public schools and can be found on the public register of teachers of the Teacher Registration Board of Western Australia.

STUDENT ATTENDANCE

	PPR	Y01	Y02	Y03	Y04	Y05	Y06
2023	94%	91%	87%	96%	95%	95%	82%
2024	94%	87%	91%	89%	94%	95%	94%
2025	76%	81%	93%	91%	86%	90%	93%
WA Public Schools 2025	89%	89%	89%	90%	89%	89%	89%

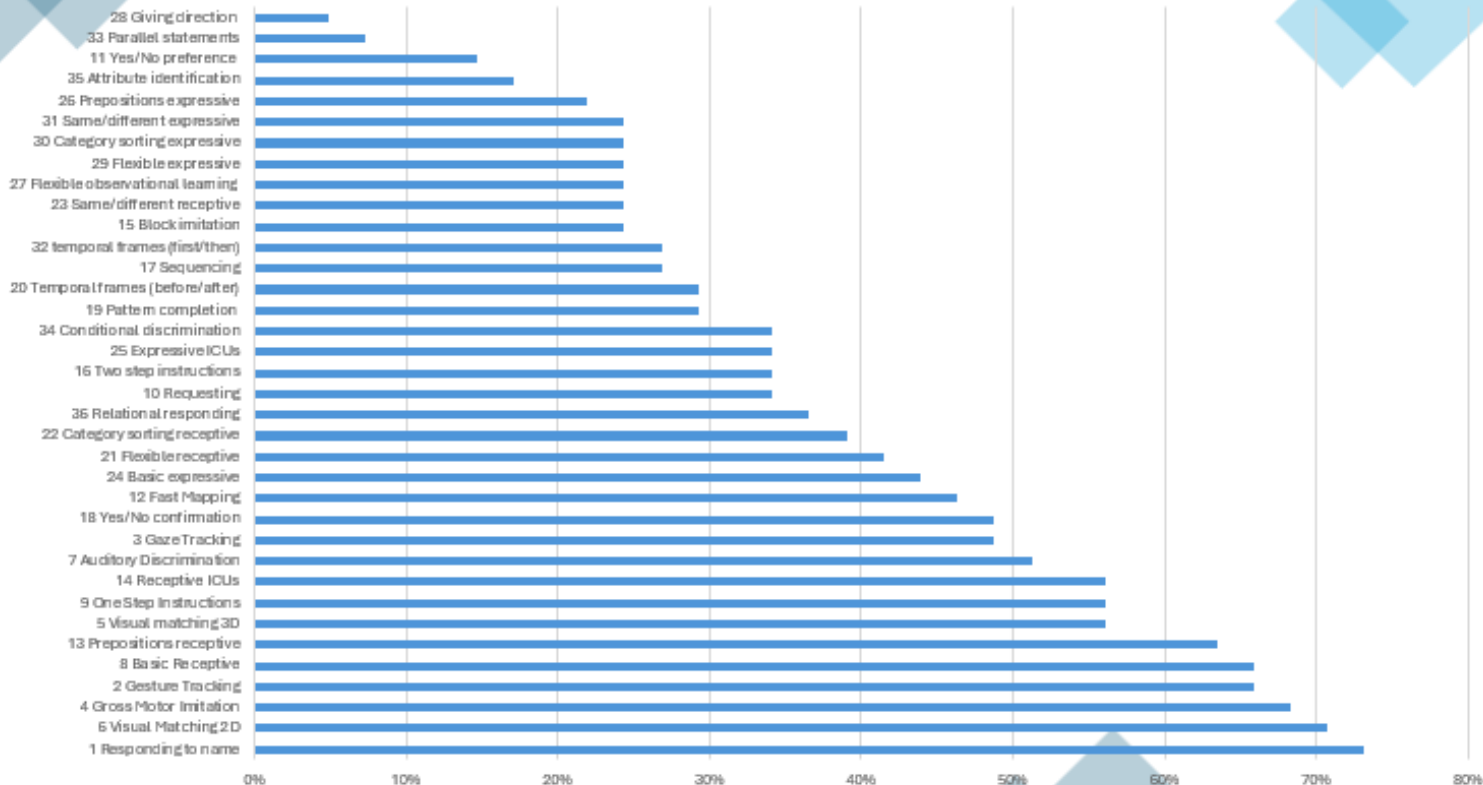
STUDENT DESTINATION DATA

Secondary School	Number
Castlereagh School	1
Leeming Senior High School ESC	5

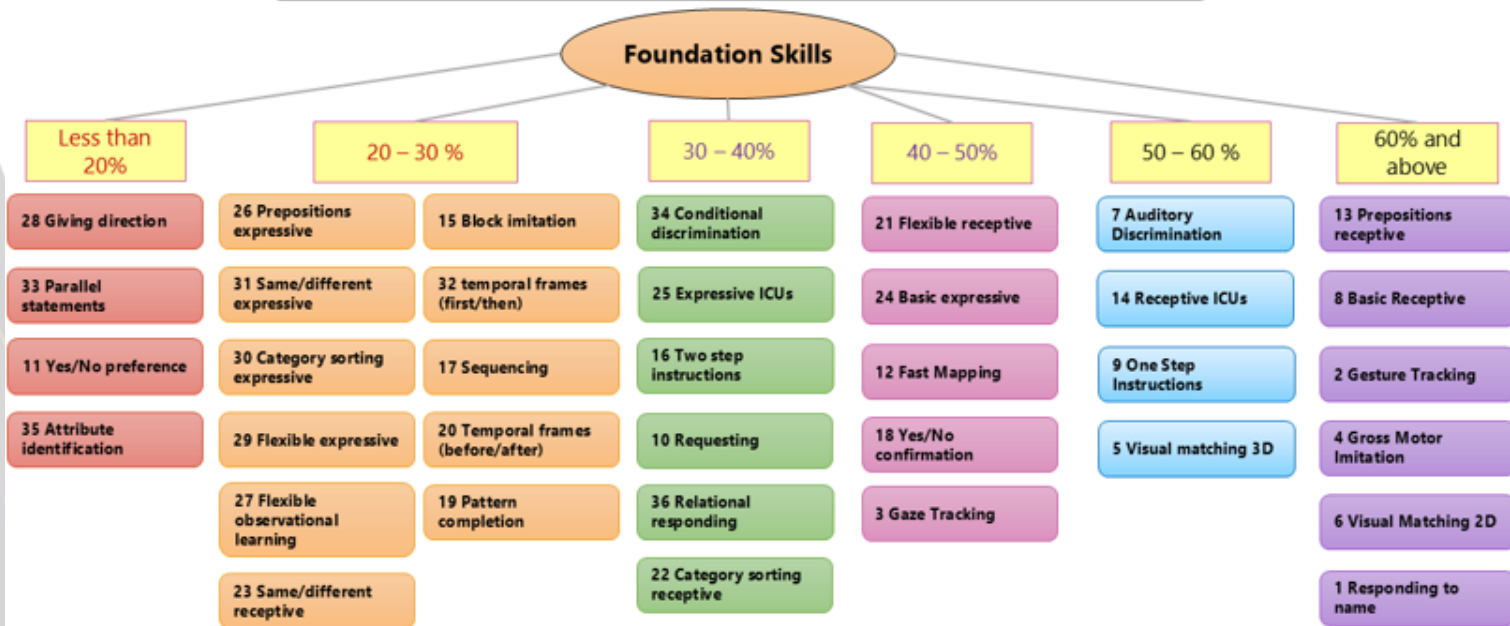
JOONDALUP FOUNDATION SKILLS -Riverton ESC data

Students focus on the 36 Foundation Skills to promote the development of prerequisite skills required for students to become independent learners.

Percentage of students who pass each Foundation Skills Assessment Whole School

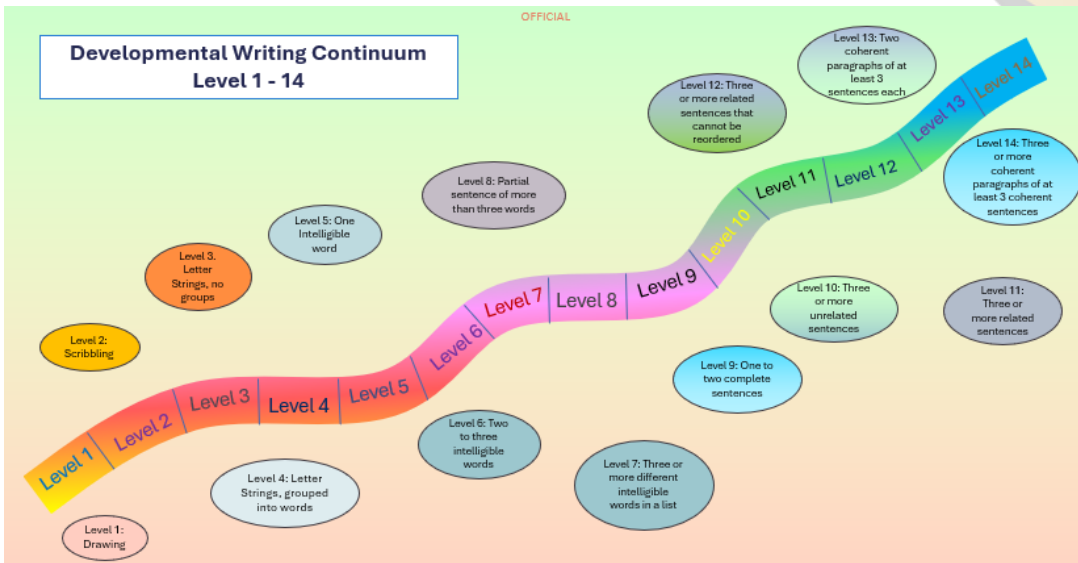


Areas that need support in each Foundation Skills using percentage of students who pass



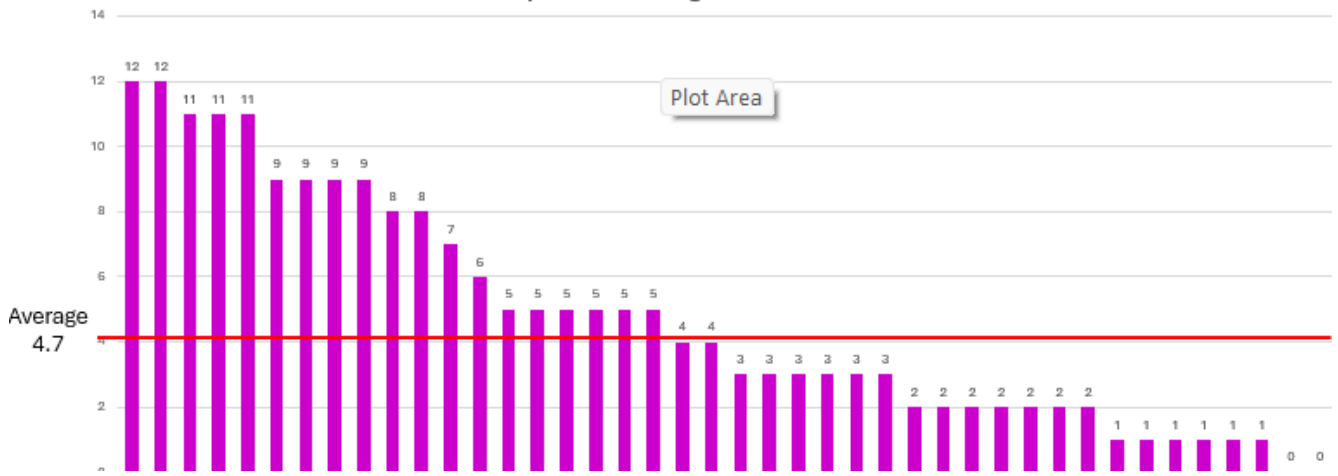
Developmental Writing Continuum- Riverton ESC data

Students are assessed twice a year against the Developmental Writing Continuum with the average across the Centre increasing between Semester 1 and 2 each year and between Semester 2 in 2024 and Semester 2 in 2025.



Whole School Data

Developmental Writing Continuum 2025 Semester 2



Developmental Writing Continuum

Comparison between Semester 1 & 2 2024

	Average
Semester 1 - 2024	3.4
Semester 2 - 2024	4.5

Comparison between Semester 2 & 2 2024 & 2025

	Average
Semester 2 - 2024	4.5
Semester 2 - 2025	4.7

Comparison between Semester 1 & 2 2025

	Average
Semester 1 - 2025	3.7
Semester 2 - 2025	4.7

STUDENT SEN ANALYSIS

	Content Descriptors / Objectives				
	Learning Areas	Total Number	Resulted	Achieved	% Achieved
Pre Primary	9	13	13	13	100.00
	9	13	13	11	84.62
	0	0	0	0	
	9	14	14	14	100.00

	Content Descriptors / Objectives				
	Learning Areas	Total Number	Resulted	Achieved	% Achieved
Year One	9	7	0	0	0.00
	9	13	13	11	84.62
	9	13	13	13	100.00
	9	14	14	14	100.00
	9	12	12	12	100.00
	9	12	12	12	100.00
	9	14	14	14	100.00
	9	14	14	13	92.86
	9	13	13	12	92.31

	Content Descriptors / Objectives				
	Learning Areas	Total Number	Resulted	Achieved	% Achieved
Year Two	0	0	0	0	
	9	12	12	12	100.00
	10	9	9	9	100.00
	9	13	13	13	100.00
	9	13	13	13	100.00
	9	12	12	12	100.00

STUDENT SEN ANALYSIS

	Content Descriptors / Objectives				
	Learning Areas	Total Number	Resulted	Achieved	% Achieved
Year Three	10	15	15	14	93.33
	10	15	15	13	86.67
	10	14	14	12	85.71
	10	15	15	14	93.33
	10	15	15	15	100.00
	10	15	15	15	100.00
	10	15	15	14	93.33
	10	15	15	15	100.00
	10	15	15	15	100.00

	Content Descriptors / Objectives				
	Learning Areas	Total Number	Resulted	Achieved	% Achieved
Year Four	10	12	12	9	75.00
	10	12	12	12	100.00
	10	12	12	11	91.67
	7	3	0	0	0.00
	10	12	12	11	91.67
	10	12	12	12	100.00
	10	12	12	12	100.00
	10	12	12	12	100.00
	10	12	12	12	100.00
	10	12	12	12	100.00

	Content Descriptors / Objectives				
	Learning Areas	Total Number	Resulted	Achieved	% Achieved
Year Five	10	13	13	10	76.92
	10	13	13	13	100.00
	10	13	13	13	100.00

	Content Descriptors / Objectives				
	Learning Areas	Total Number	Resulted	Achieved	% Achieved
Year Six	10	14	14	13	92.86
	10	13	13	13	100.00
	0	0	0	0	
	10	13	13	13	100.00
	10	13	13	13	100.00
	0	0	0	0	
	10	13	13	11	84.62
	10	13	13	12	92.31
	10	13	13	12	92.31

FINANCIAL SUMMARY

INCOME - Dec 2025 (Verified Dec Cash)		
	Current Budget (\$)	Actual YTD (\$)
Carry Forward (Cash)	45,285	45,285
Carry Forward (Salary)	31,182	31,182
STUDENT-CENTRED FUNDING		
Per Student	417,162	417,162
School and Student Characteristics	2,624,921	2,624,921
Disability Adjustments	10,080	10,080
Targeted Initiatives	80,662	80,662
Operational Response Allocation	1,151	1,151
Total Funds:	3,133,976	3,133,976
TRANSFERS AND ADJUSTMENTS		
Regional Allocation	0	0
School Transfers – Salary	(190,577)	(190,577)
School Transfers - Cash	178,197	178,197
Department Adjustments	0	0
Total Funds:	(12,380)	(12,380)
LOCALLY RAISED FUNDS (REVENUE)		
Voluntary Contributions	2,580	2,339
Charges and Fees	24,151	32,502
Fees from Facilities Hire	0	0
Fundraising/Donations/Sponsorships	1,020	1,380
Commonwealth Govt Revenues	0	0
Other State Govt/Local Govt Revenues	8,333	8,333
Revenue from CO, Regional Office and Other scho	0	0
Other Revenues	2,600	5,548
Transfer from Reserve or DGR	0	0
Residential Accommodation	0	0
Farm Revenue (Ag and Farm Schools only)	0	0
Camp School Fees (Camp Schools only)	0	0
Total Funds:	38,684	50,102
TOTAL	3,236,747	3,248,165

ONE LINE BUDGET - Dec 2025 (Verified Dec Cash)		
	Current Budget (\$)	Actual YTD (\$)
Carry Forward (Cash):	45,285	45,285
Carry Forward (Salary):	31,182	31,182
INCOME		
Student-Centred Funding (including Transfers & Adjustments):	3,121,596	3,121,596
Locally Raised Funds:	38,684	50,102
Total Funds:	3,236,747	3,248,165
EXPENDITURE		
Salaries:	2,795,704	2,795,704
Goods and Services (Cash):	234,476	189,099
Total Expenditure:	3,030,180	2,984,803
VARIANCE:	206,568	263,363

	Current Budget (\$)	Actual YTD (\$)
SALARIES		
Appointed Staff	2,480,391	2,480,391
New Appointments	0	0
Casual Payments	307,874	307,874
Other Salary Expenditure	7,440	7,440
Total Funds:	2,795,705	2,795,705
GOODS AND SERVICES (CASH EXPENDITURE)		
Administration	19,950	16,928
Lease Payments	0	0
Utilities, Facilities and Maintenance	9,500	5,852
Buildings, Property and Equipment	26,000	20,511
Curriculum and Student Services	155,016	128,209
Professional Development	20,000	15,594
Transfer to Reserve	2,000	2,000
Other Expenditure	2,010	5
Payment to CO, Regional Office and Other schools	0	0
Residential Operations	0	0
Residential Boarding Fees to CO (Ag Colleges only)	0	0
Farm Operations (Ag and Farm Schools only)	0	0
Farm Revenue to CO (Ag and Farm Schools only)	0	0
Camp School Fees to CO (Camp Schools only)	0	0
Total Funds:	234,476	189,099
TOTAL	3,030,181	2,984,804